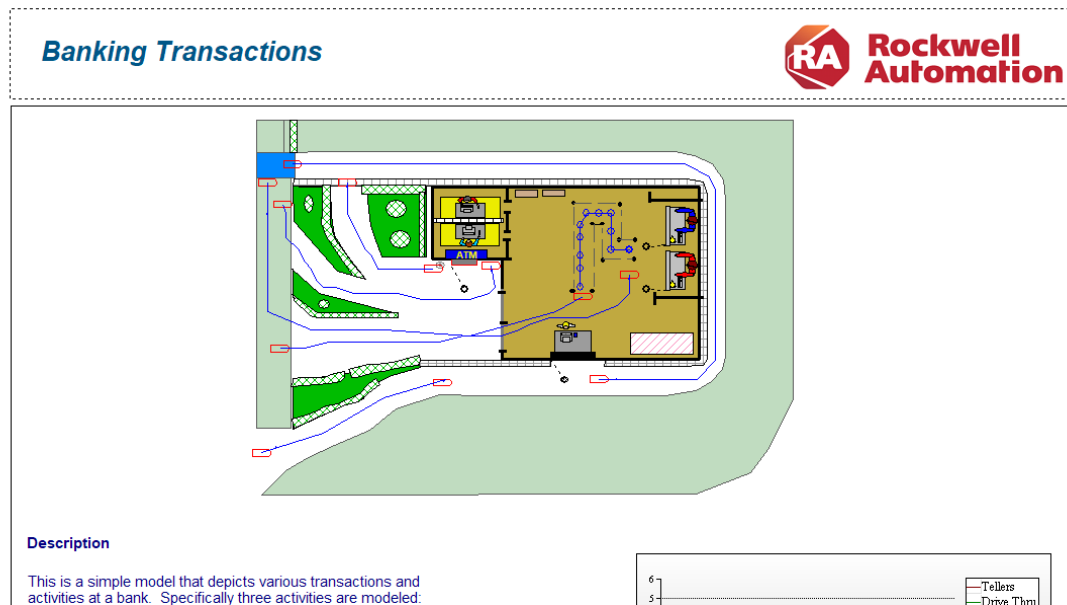


## Lab Arena: Output analysis and 3D

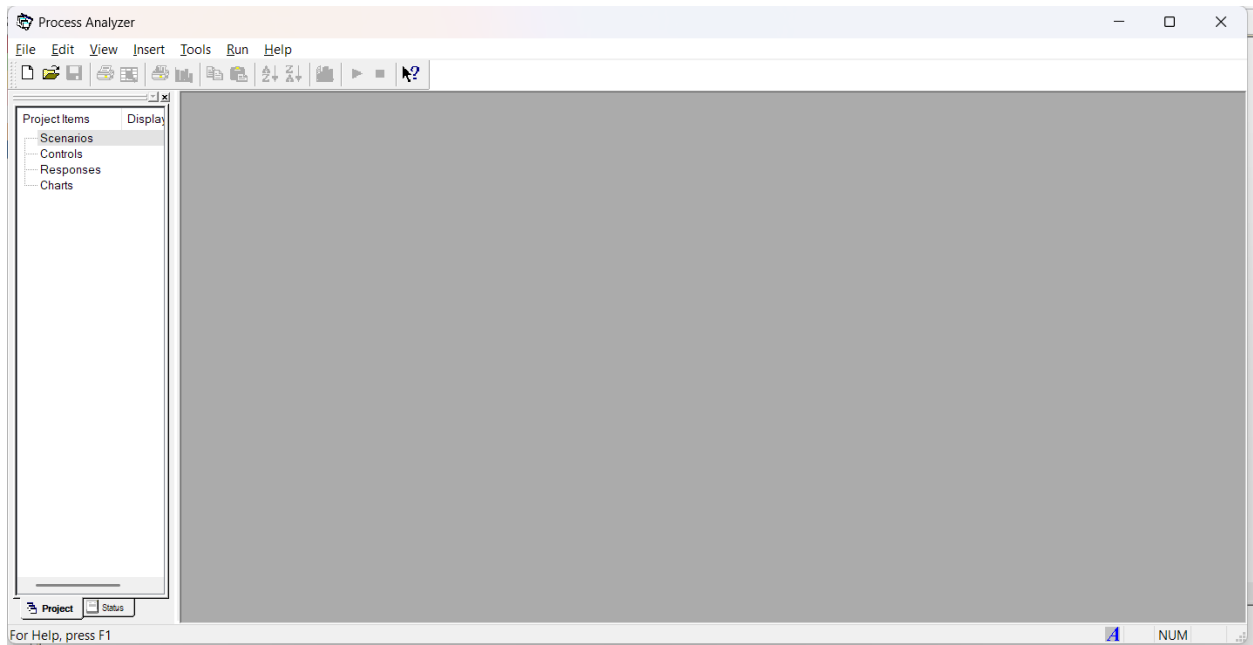
Objectives: to better understand ARENA PAN and OPTOQUEST

Procedure:

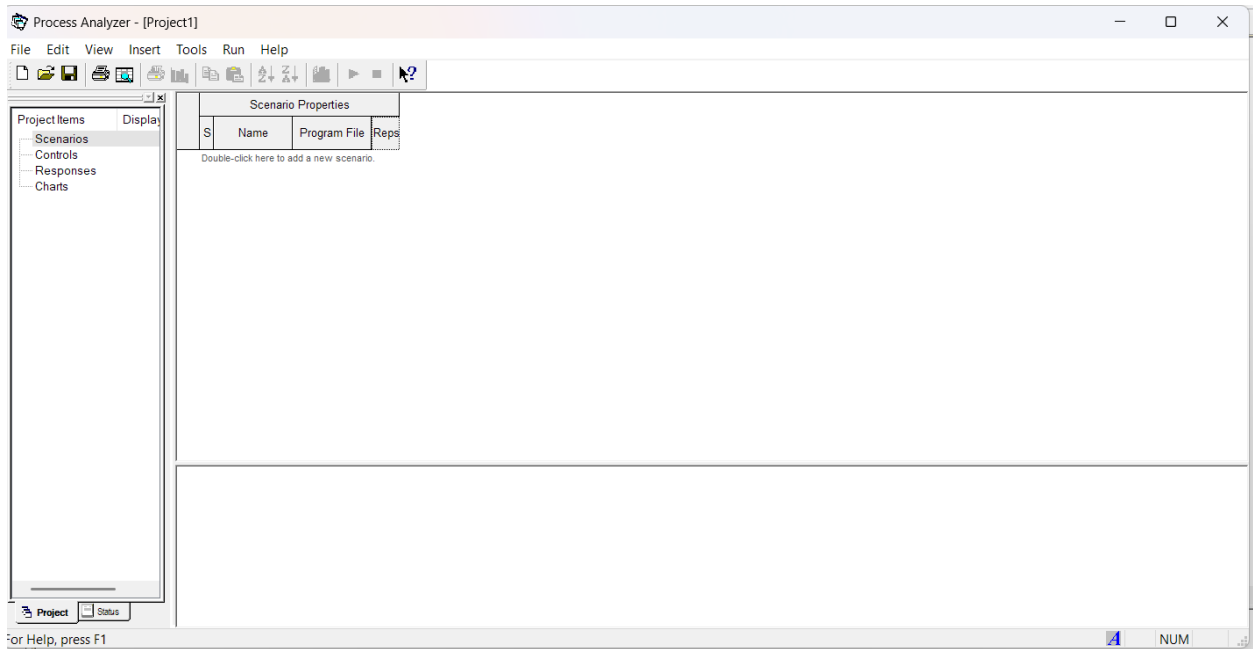
- 1- Start arena program
- 2- Files in the menu → Browse examples → Select Banking transactions



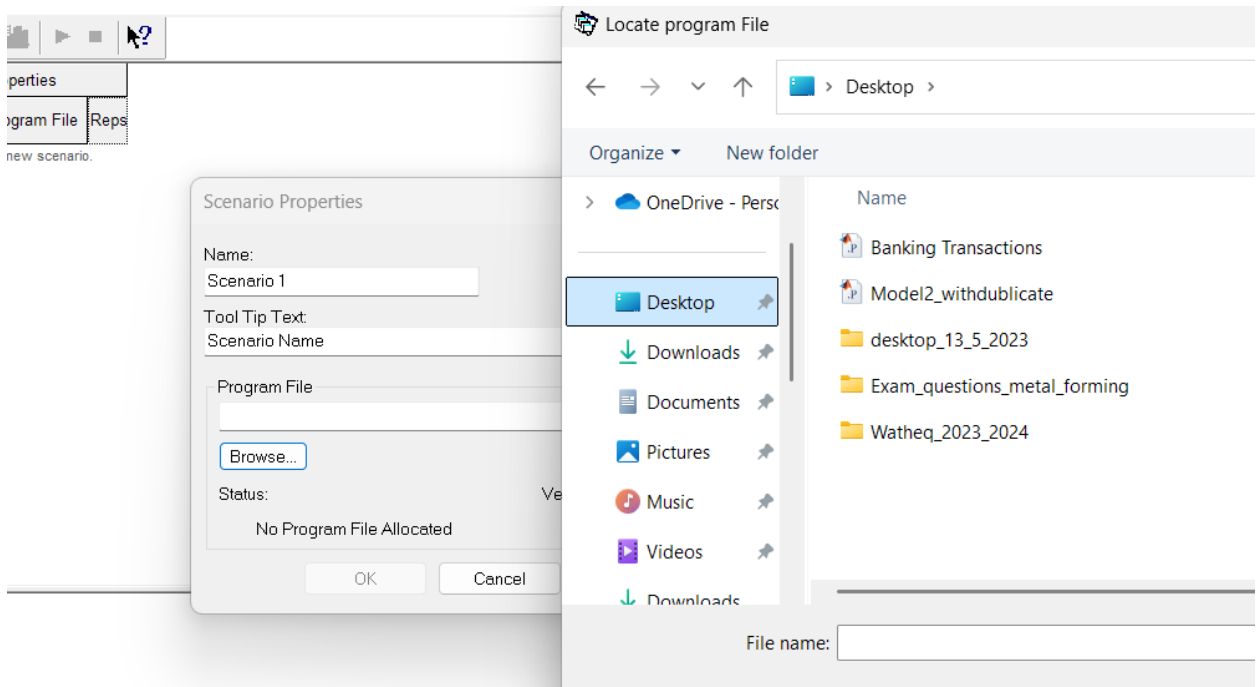
- 3- File in the menu → save as → select my documents or desktop → save a copy of the model such that the original is not damaged
- 4- Run the model to obtain the .p file then stop the run
- 5- Select Tools in the Menu then process analyser to get



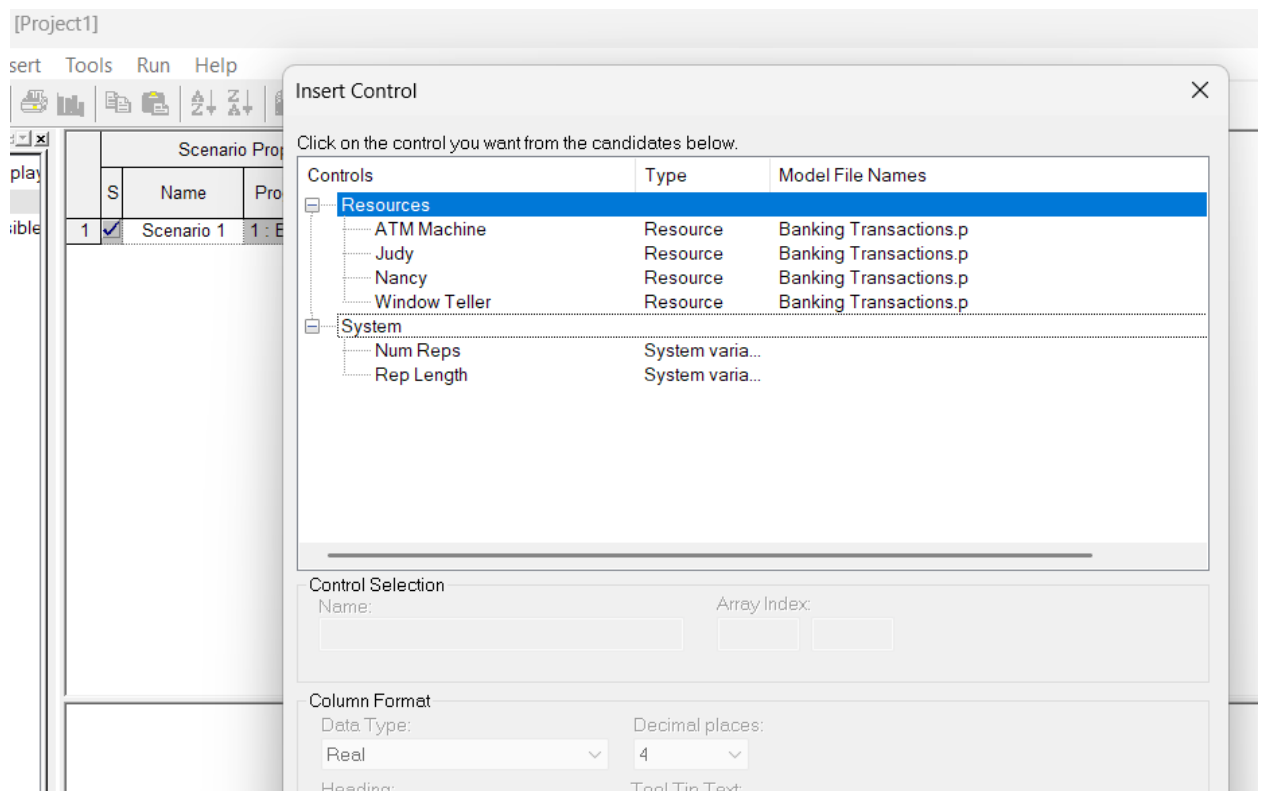
## 6- New project



7- From menu insert → scenario → browse and select the .p file generated from my document or desktop → ok



8- Select insert from menu → controls → add all resources



9- Select insert from menu → Select responses → Select four main responses, system number out and entity total times for all types

Go to minitab and design a full factorial  $2^2$  experiment  $2^4$  experiments and run the scenarios.

To analyse in mintab make the replicate number 3 and fill in the results of the

Use the PAN as a reference and modify the resources accordingly then analyse using MINITAB