

Automation and Control Lab

Experiment 8

Data Sheet: PLC for Pneumatic Circuits (2)

1. Construct the pneumatic circuit in the Figure 1.

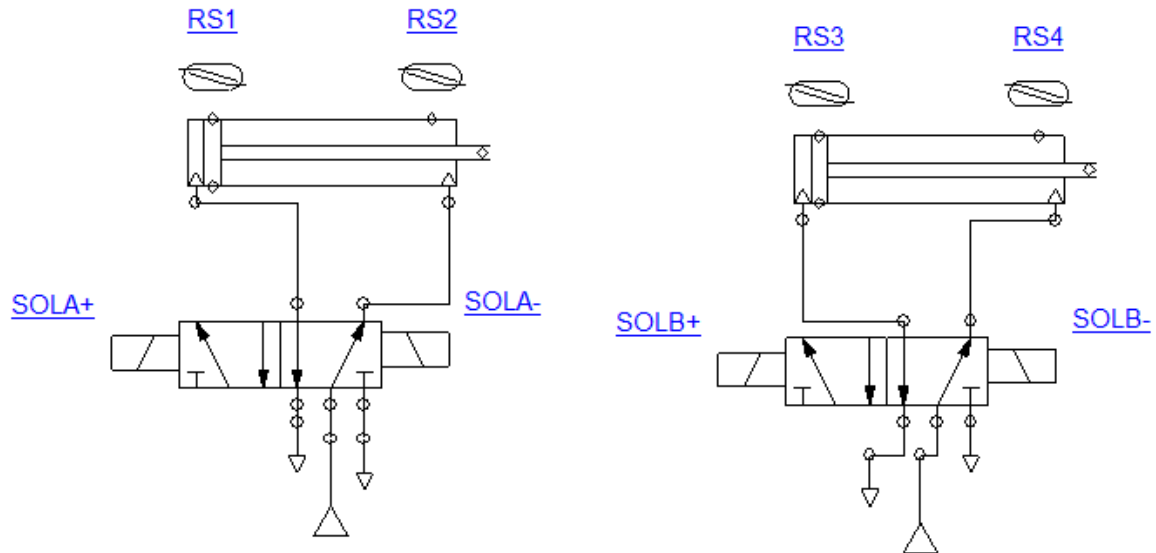


Figure 1

2. With your supervisor, built the AB PLC ladder diagram in Figure 2, please notice the name of the libraries from which you can select the components.

Exercise: Compare between the outputs of the different timers and the counter you have simulated in the previous steps.

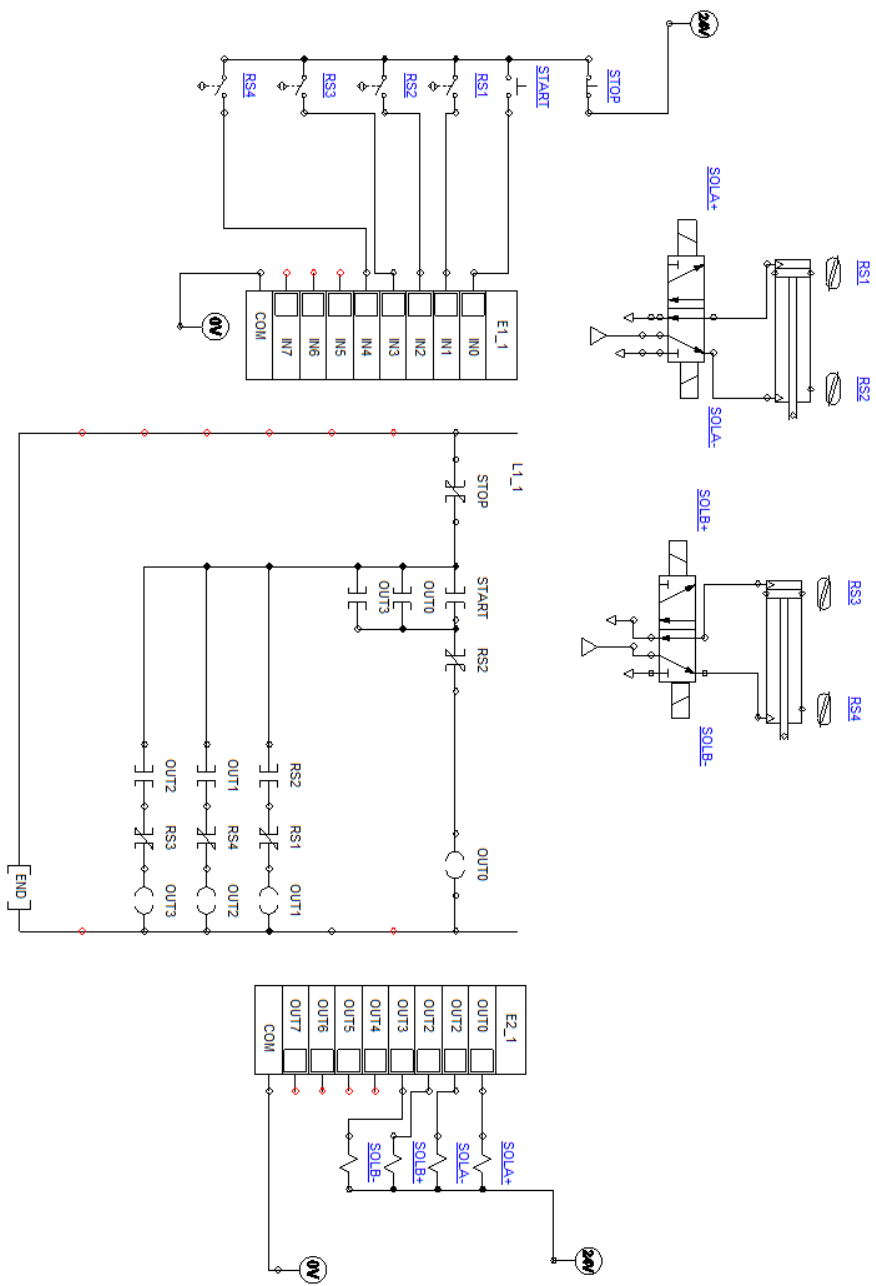


Figure 2