

Automation and Control Lab

Experiment 7

Data Sheet: PLC for Pneumatic Circuits

1. Construct the pneumatic circuit in the Figure 1.

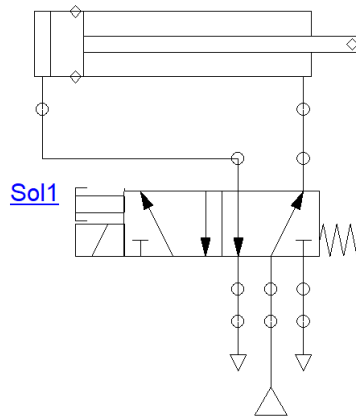


Figure 1

2. With your supervisor, built the AB PLC ladder diagram in Figure 2, please notice the name of the libraries from which you can select the components.

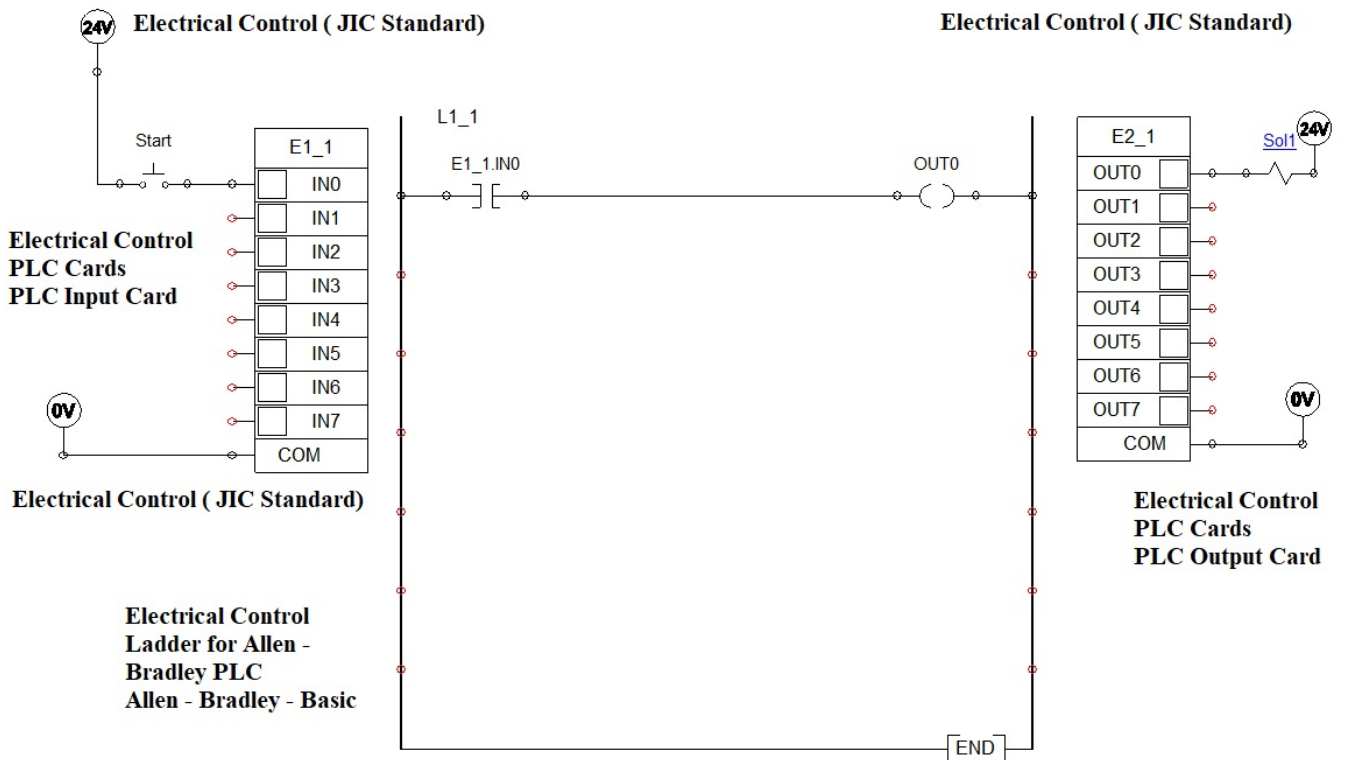


Figure 2

3. With your supervisor, built the AB PLC ladder diagram in Figure 3, please notice the name of the libraries from which you can select the components.

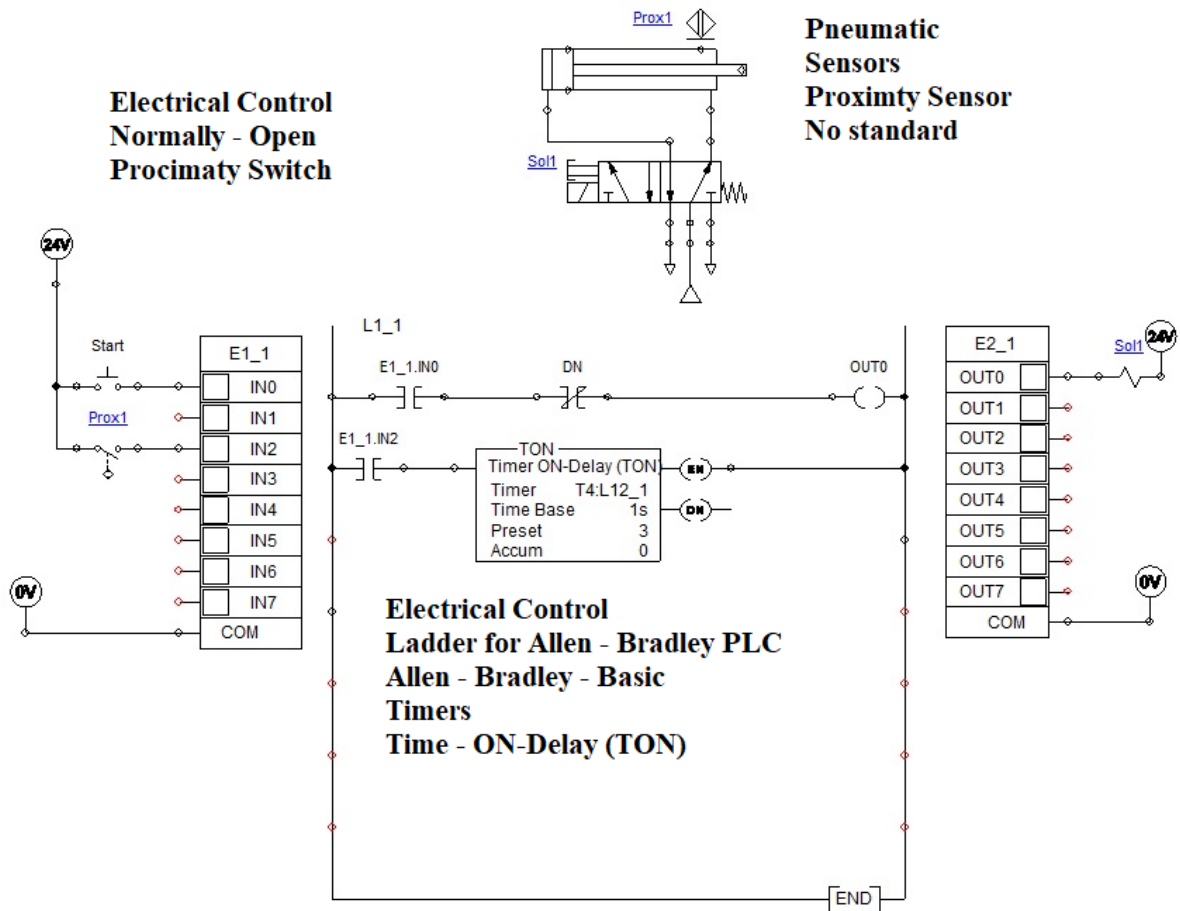


Figure. 3

5. Rebuild the AB PLC ladder diagram in Figure 3 by using a counter that will counts up to 10 (Figure 6), please notice the name of the libraries from which you can select the components.

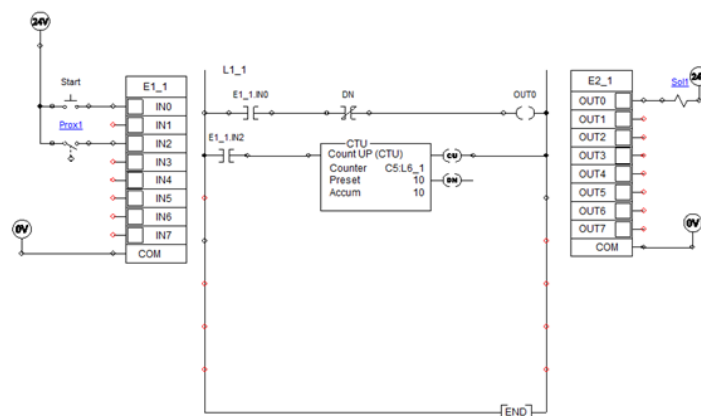


Figure. 6

Exercise: Compare between the outputs of the different timers and the counter you have simulated in the previous steps.